
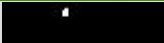


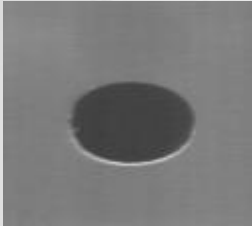

IICc**AUTOMATION INSPECTION ITEMS (EXTERIOR)**

Date : 2017/11/14

1. CG	2. COG	3. ITO	4. Light Guide Plate	5. OLED	6. LOGO
1. Edge crack	1. CF sides crack	1. Etching defect	1. Cold material	1. Scratch	1. Scratch
2. Function hole crack	2. TFT sides crack	2. Etching break	2. Light spot	2. Abnormal print	2. Contaminants
3. Abnormal corner guidance cut	3. CF corner crack		3. Mixed materials	3. Dirt/Dust	3. Stripe
4. Scratch	4. TFT corner crack		4. Shadow	4. Foreigner	4. Pin hole
5. Deep scratch	5. Break		5. Friction marks	5. Up side edge crack	5. Edge paste
6. Pin hole	6. Silver pad defect		6. Spray to oil	6. Lack of blue Mylar	6. Rust
7. Abnormal print	7. Edge sides glass residue		7. Red spot	7. Dent	7. Tangerine skin
8. Dirt/Dust on glass surface	8. Abnormal cover film		8. Black spot	8. IC pin Defect	8. Dent
9. Glass dimension	9. Polarizer scratch		9. Dark line	9. Overflow glue	9. Haze
10. Coating Defect			10. Mixed materials	10. Lack of Red Mylar	
11. VA Transmission rate			11. foreign matter	11. Back side edge crack	
12. IR hole			12. Yellow spot		
13. Glass warpage			13. Chipping		
14. Glass thickness			14. Pull wire		
15. AG Gloss reflectivity			15. Bubble		
16. AG Shadow					
17. Dent(AG)					
18. Up side Chipping(AG)					
19. Back side Chipping(AG)					
20. Scratch(AG)					
21. Crack(AG)					
22. Scratch on raw glass					
23. Circler Defect(AG)					

1 Edge crack		
2014-7-18	7" (CG)	Go to TOP
		

IIIc

2 Function hole crack		
2014-7-18	7" (CG)	Go to TOP
		

IICc

3 Abnormal corner Guidance cut

2012-10-8

14 × 16" (CG)

[Go to TOP](#)



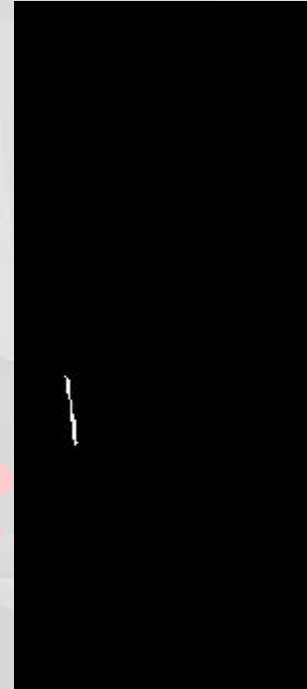
HCc

4 Scratch

2014-7-18

7" (CG)

[Go to TOP](#)



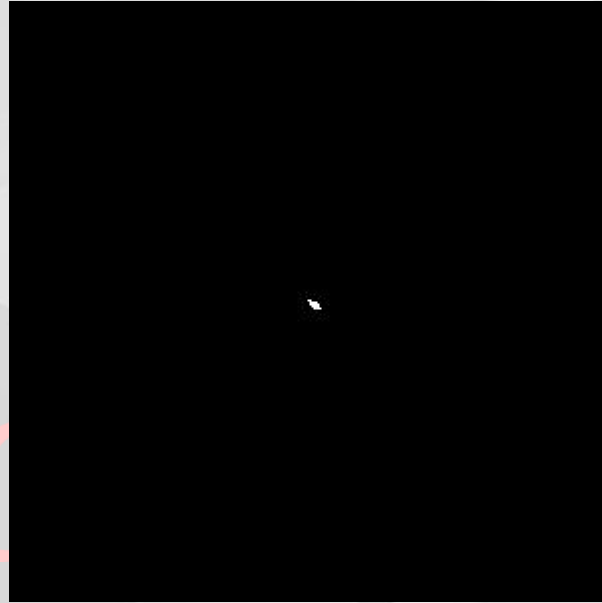
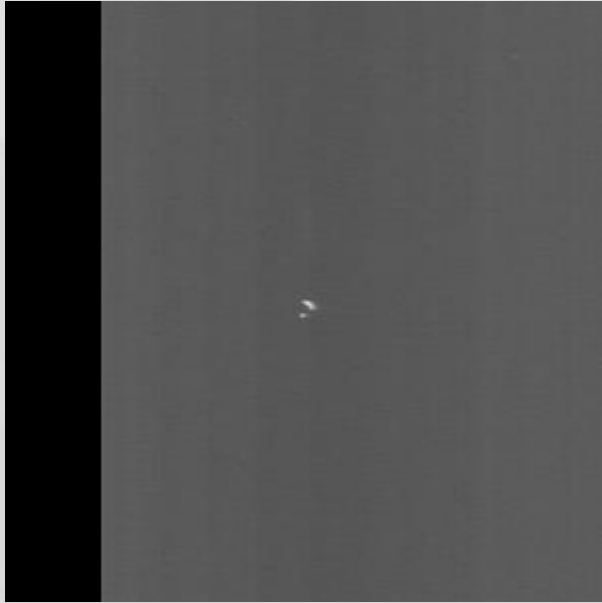
II Cc

5 Deep Scratch

2014-7-18

7" (CG)

[Go to TOP](#)

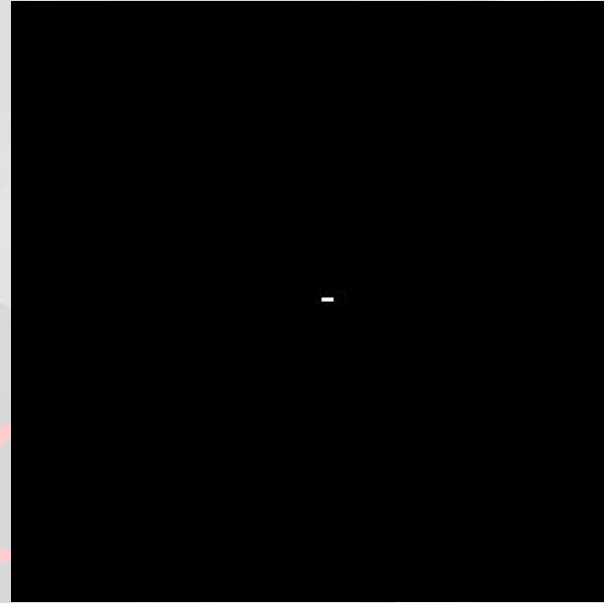
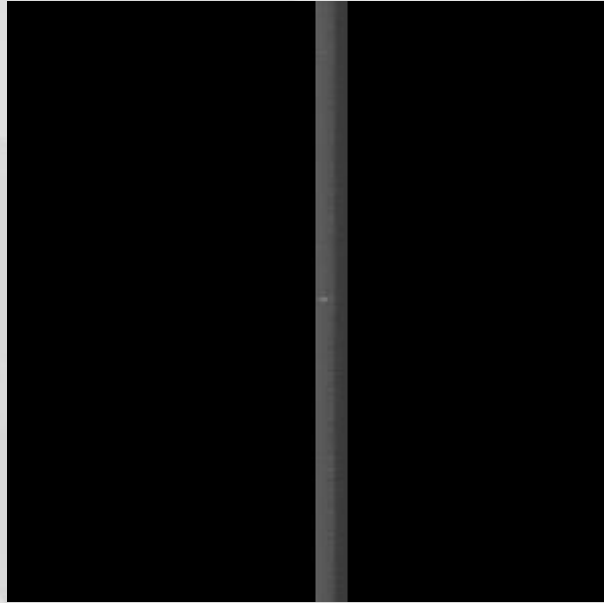


6 Pin Hole

2014-7-18

7" (CG)

[Go to TOP](#)

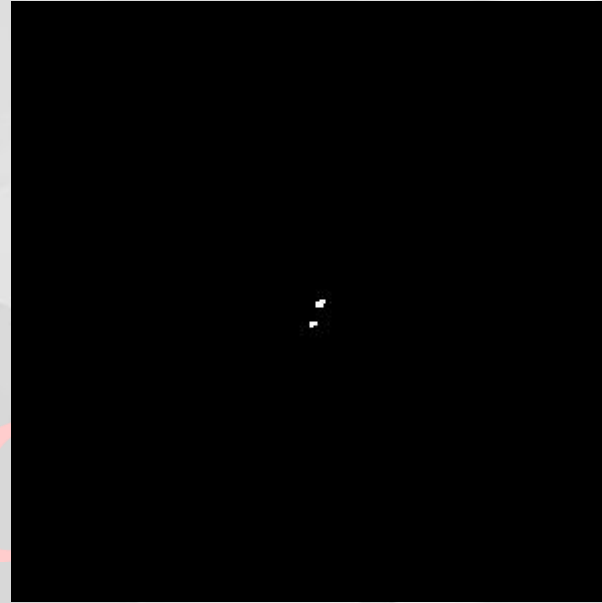
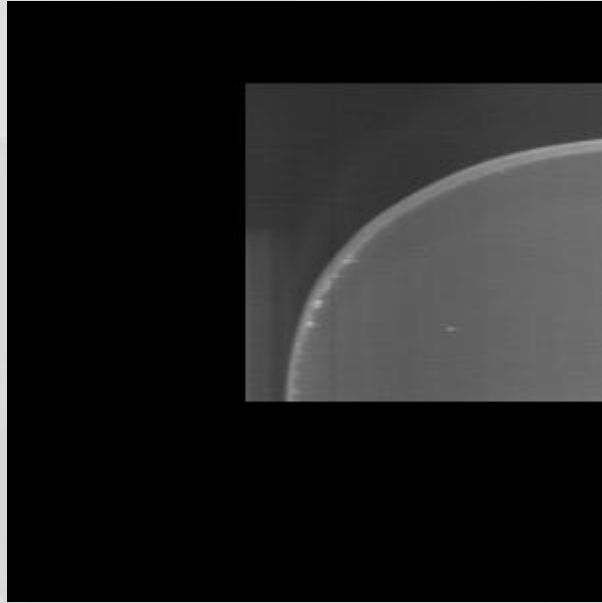


7 Abnormal Print

2014-7-18

7" (CG)

[Go to TOP](#)

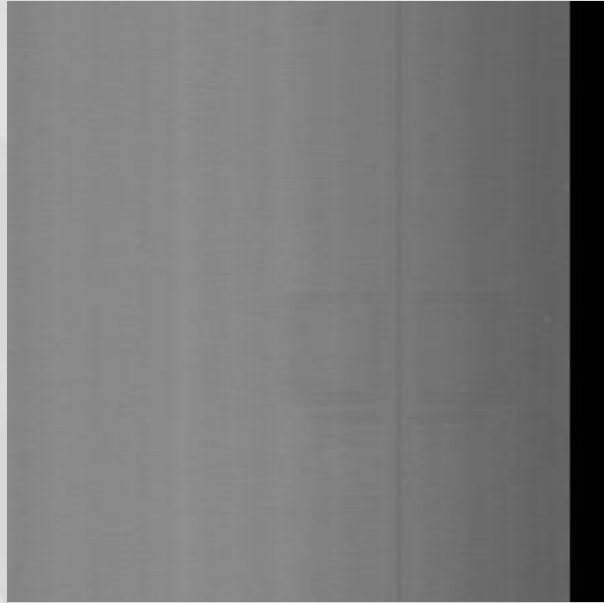


8 Dirt/Dust on glass surface

2014-7-18

7" (CG)

[Go to TOP](#)

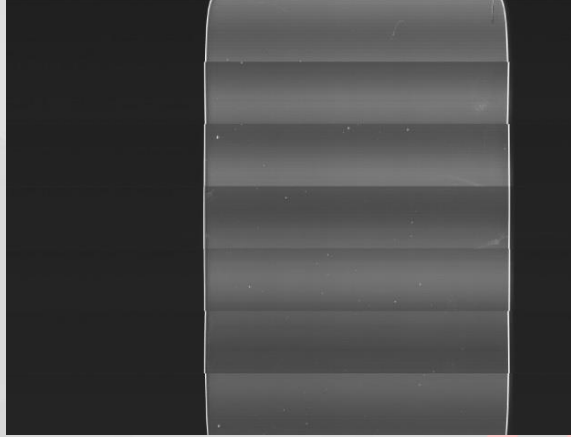


9 Glass dimension

2017-1-11

207.96 × 141 × 2 mm

[Go to TOP](#)



Pixels	Width(mm)
3398	141.57

HCc

10 Coating Defect

2017-1-17

12.3" (CG)

[Go to TOP](#)



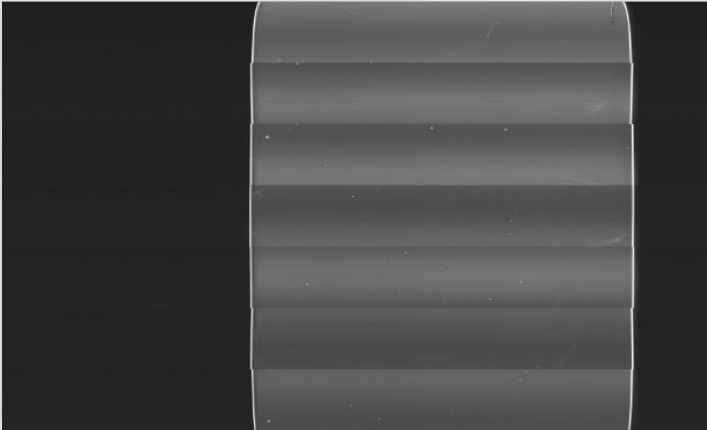
II Cc

11 VA Transmission rate

2017-1-11

207.96 × 141 × 2 mm

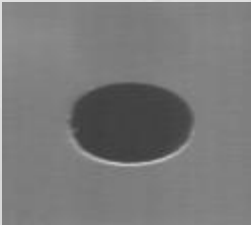
[Go to TOP](#)



Transmission

115.7769

и Сс

12 IR Hole				
2014-7-18	7"(CG)	Go to TOP		
		<table border="1"><tr><td>Transmission</td></tr><tr><td>114.7266</td></tr></table>	Transmission	114.7266
Transmission				
114.7266				

IICc

13 Glass warpage

2013-12-02

4.7" (CG)

[Go to TOP](#)



Warpage

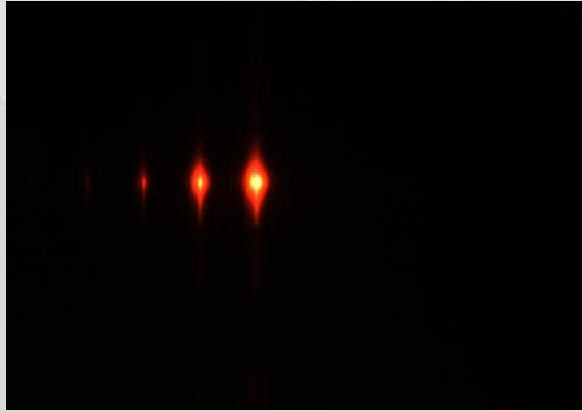
105.0045

14 Glass thickness

2017-1-17

310 × 128 × 1.1 mm
(CG)

[Go to TOP](#)



Pixels	Thickness(um)
193	1072

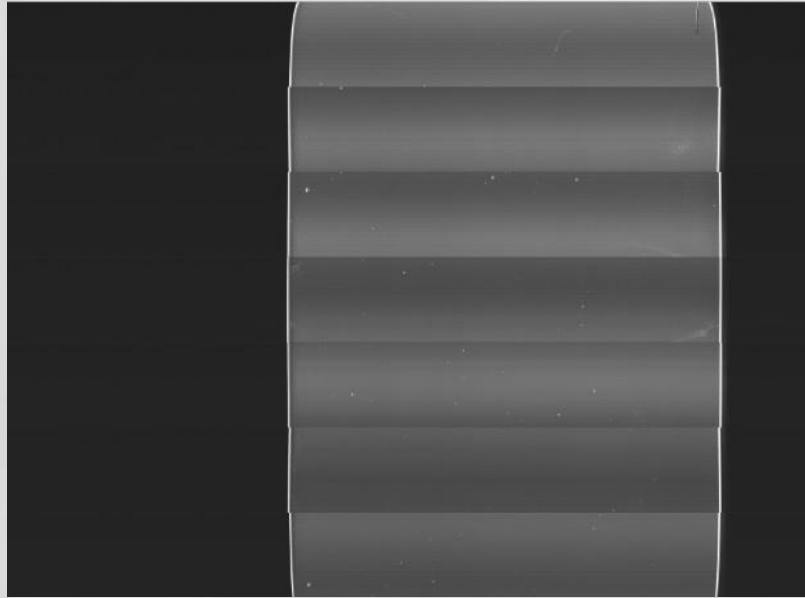
HCc

15 AG Gloss reflectivity

2017-1-11

207.96 × 141.58 × 2 mm
(CG)

[Go to TOP](#)



Reflection

102.8188

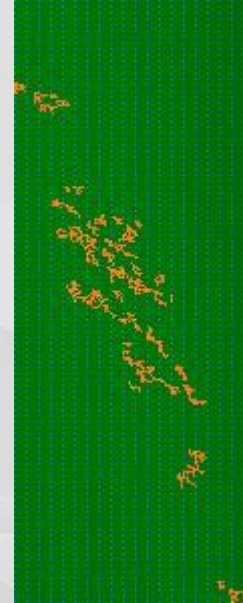
Cc

16 AG Shadow

2016-12-30

195.75 × 154.56 ×
1.1mm (CG)

[Go to TOP](#)



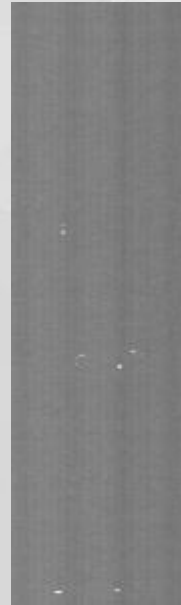
IICc

17 Dent(AG)



2016-12-30

195.75 × 154.56 ×
1.1mm (CG)

[Go to TOP](#)



II Cc

18 Up side Chipping(AG)		
2016-12-30	195.75 × 154.56 × 1.1mm (CG)	Go to TOP
		

IICc

19 Back side Chipping(AG)		
2016-12-30	195.75 × 154.56 × 1.1mm (CG)	Go to TOP
		

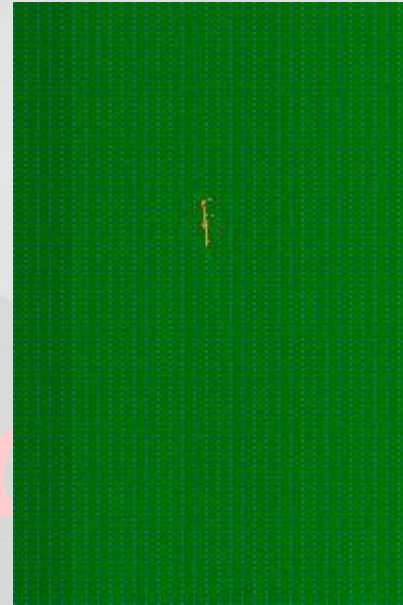
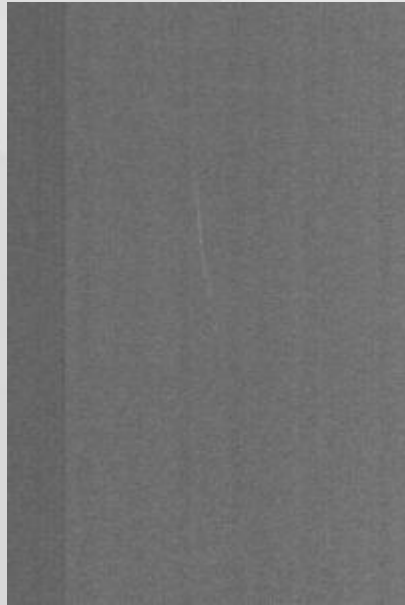
IICc

20 Scratch(AG)

2016-12-7

243.79 × 137.29 ×
1.3mm (CG)

[Go to TOP](#)

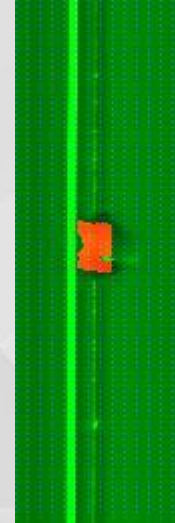
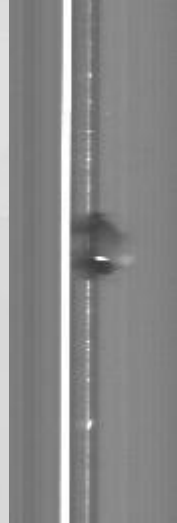


21 Crack(AG)

2017-1-17

207.96 × 141.58 ×
2mm (CG)

[Go to TOP](#)



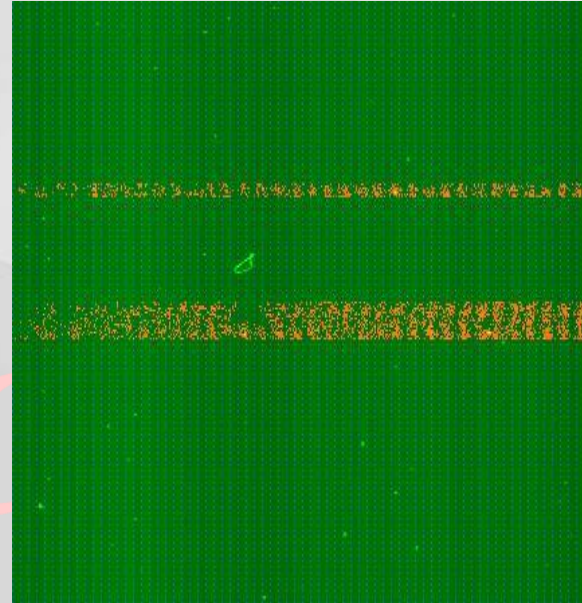
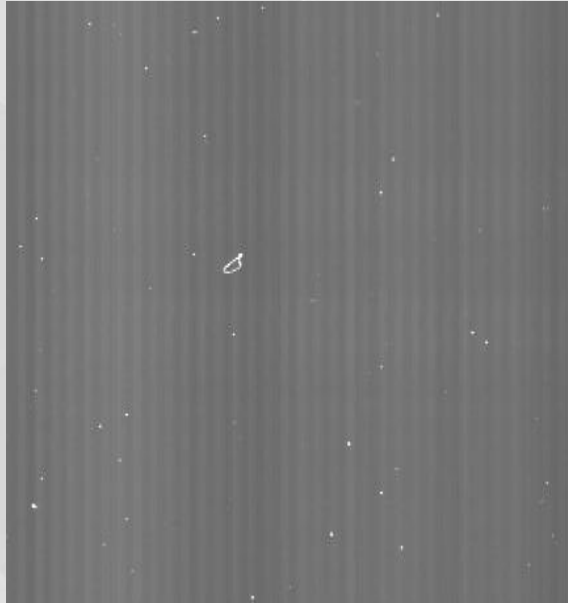
II Cc

22 Scratch on raw glass

2016-10-18

310 × 128 × 1.1mm
(CG)

[Go to TOP](#)



23 Circler Defect(AG)


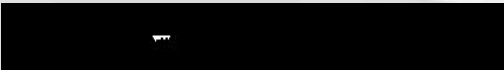
2016-11-25

207.96 × 141.58 ×
2mm (CG)

[Go to TOP](#)



IICc

1 CF sides crack		
2015-7-24	5" (COG)	Go to TOP
		

IICc

2 TFT sides crack

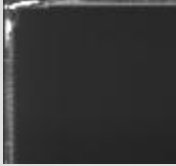
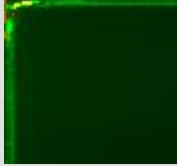
2015-7-24

5" (COG)


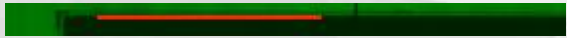
[Go to TOP](#)





IICc

3 CF corner crack		
2015-7-24	5" (COG)	Go to TOP
		

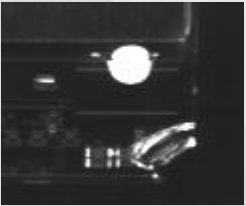
IIIc

4 TFT corner crack		
2015-7-24	5" (COG)	Go to TOP
		



IICc

5 Break		
2015-7-24	5" (COG)	Go to TOP
		

IICc

6 Sliver pad defect		
2015-7-24	5" (COG)	Go to TOP
		

IICc

7 Edge sides glass residue		
2015-7-24	5" (COG)	Go to TOP
		

HCc

8 Abnormal cover film		
2015-2-25	5" (COG)	Go to TOP
		

IICc

9 Polarizer scratch		
2015-7-8	5" (COG)	Go to TOP
		

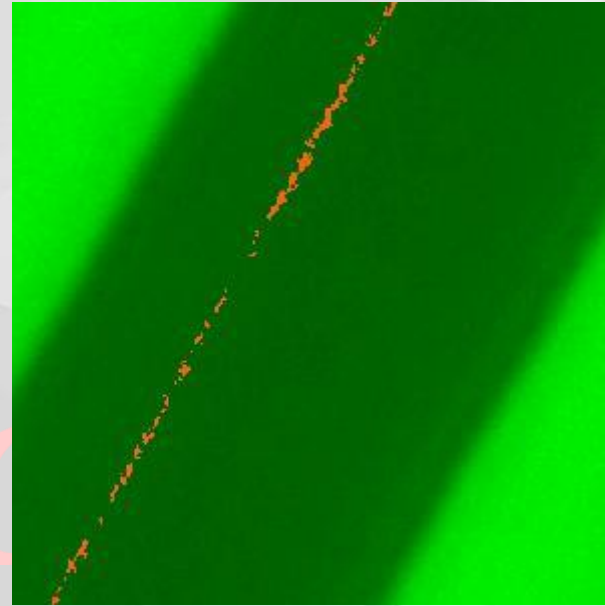
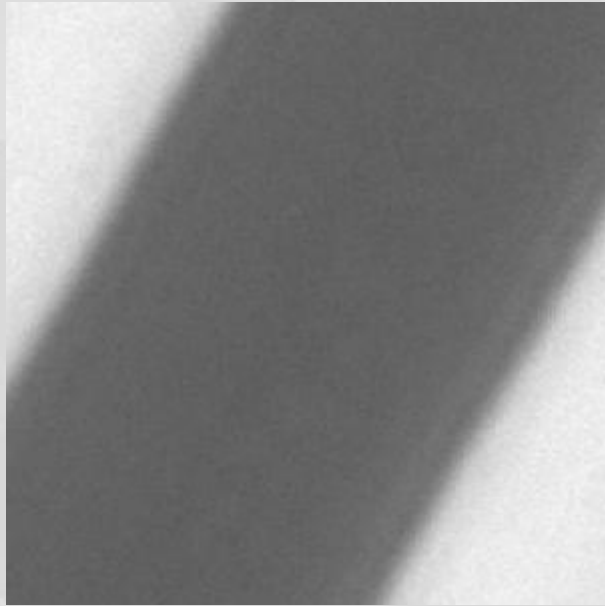
IIIc

1 Etching defect

2016-02-01

1.0" (ITO)

[Go to TOP](#)

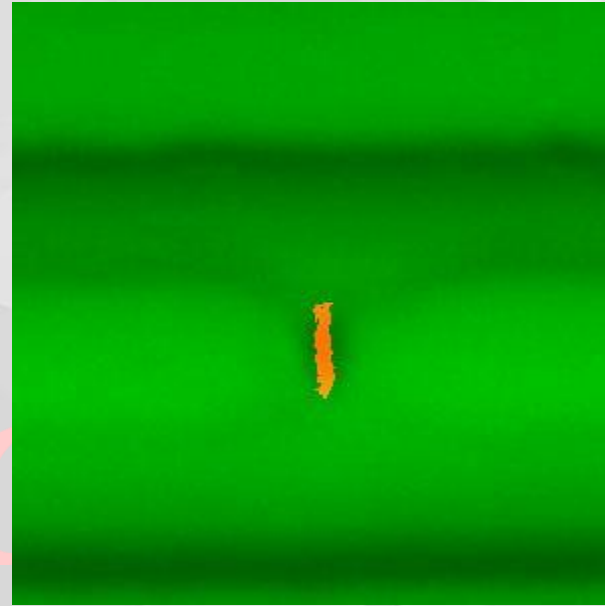
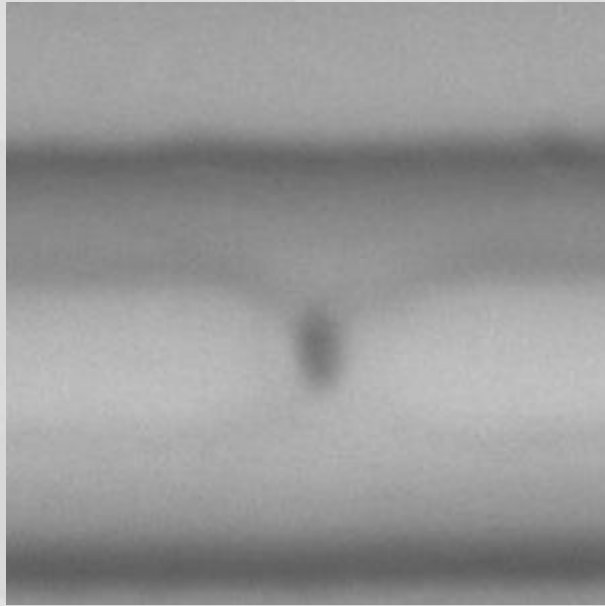




2 Etching break

2016-02-01

1.0" (ITO)

[Go to TOP](#)



1 Cold material		
2016-7-29	150.5 × 88.7 × 2.6mm (Light Guide Plate)	Go to TOP
		

ILCC

2 Light spot		
2016-7-29	150.5 × 88.7 × 2.6mm (Light Guide Plate)	Go to TOP
		

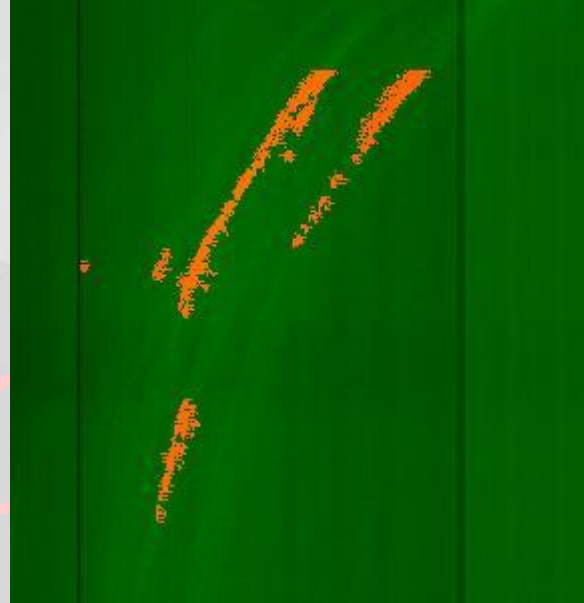
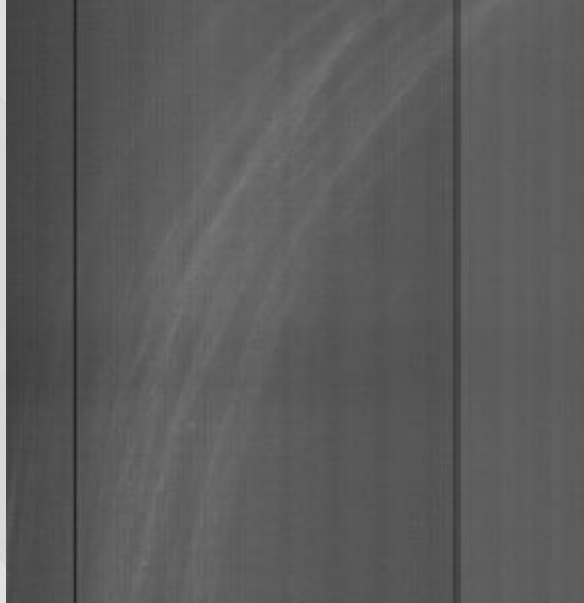
II Cc

3 Mixed materials

2016-7-29

150.5 × 88.7 × 2.6mm
(Light Guide Plate)

[Go to TOP](#)

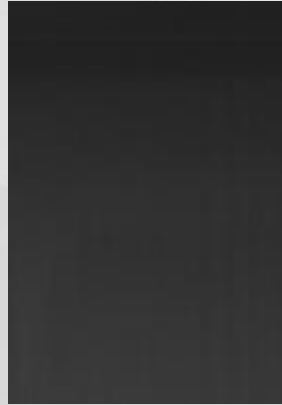


4 Shadow

2016-8-1

180.5 × 135.5 × 3.0mm
(Light Guide Plate)

[Go to TOP](#)



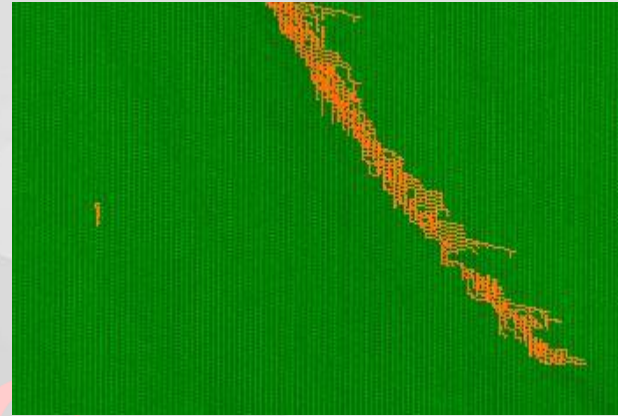
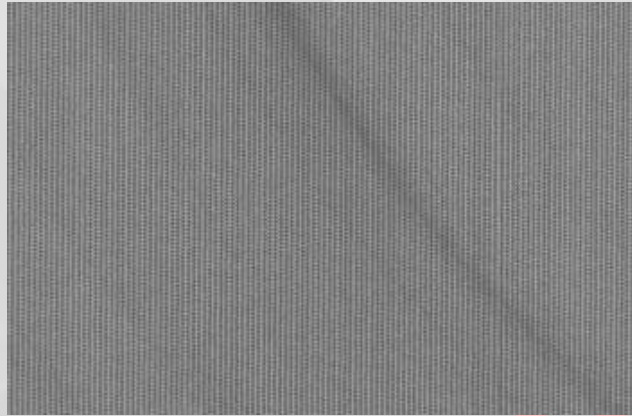
IICc

5 Friction marks

2016-8-1


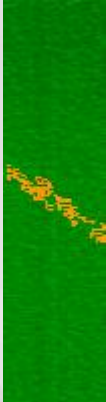
180.5 × 135.5 × 3.0mm
(Light Guide Plate)

[Go to TOP](#)



ncc

6 Spray to oil

2016-7-29	177.5 × 135.5 × 3.6mm (Light Guide Plate)	Go to TOP
		

IICc

7 Red Spot		
2016-7-29	177.5 × 135.5 × 3.6mm (Light Guide Plate)	Go to TOP
		

II Cc

8 Black spot		
2016-7-29	177.5 × 135.5 × 3.6mm (Light Guide Plate)	Go to TOP
		

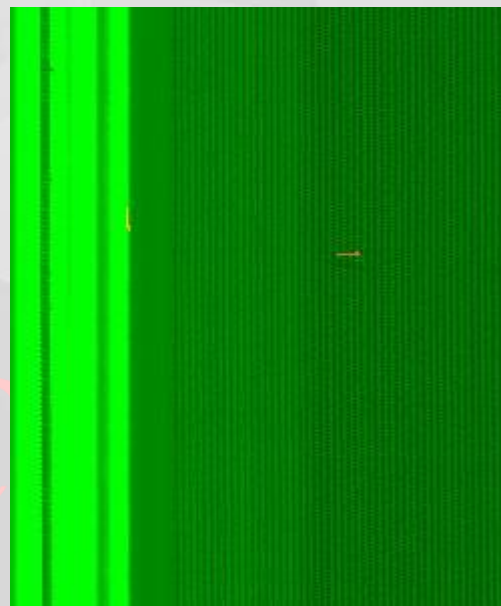
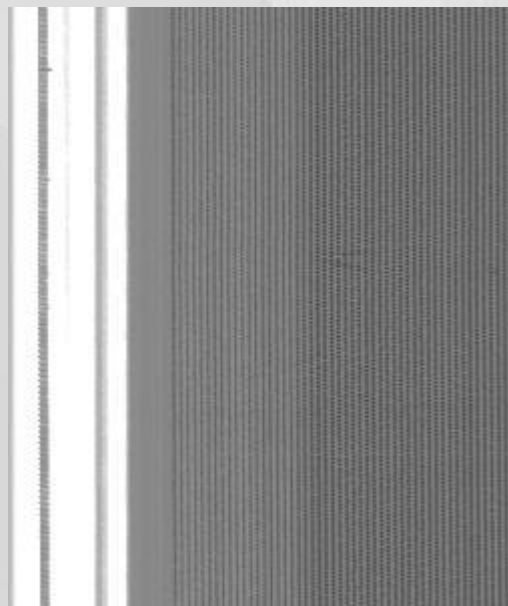
IICc

9 Dark Line

2016-8-1

180.5 × 135.5 × 3.0mm
(Light Guide Plate)

[Go to TOP](#)

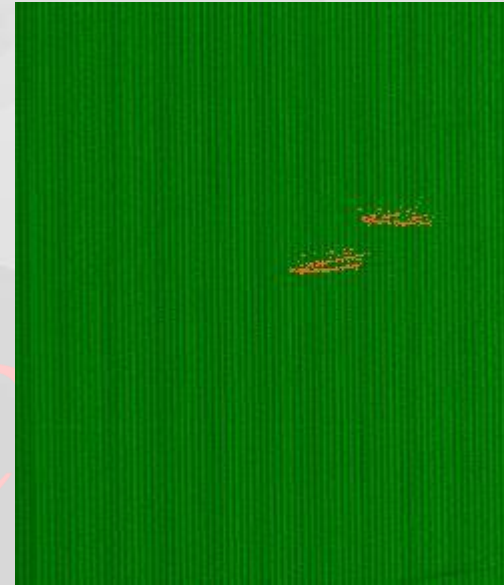
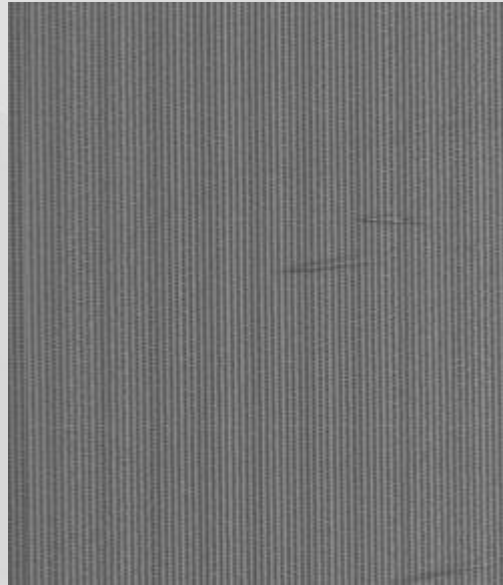


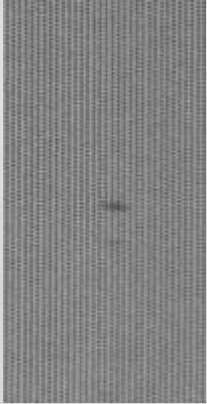
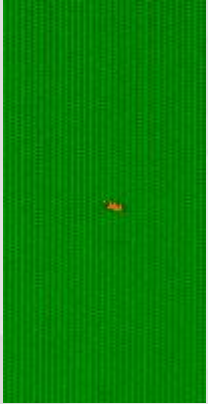
10 Mixed materials

2016-8-1



150.5 × 88.7 × 2.6mm
(Light Guide Plate)

[Go to TOP](#)



11 foreign matter		
2016-8-1	150.5 × 88.7 × 2.6mm (Light Guide Plate)	Go to TOP
		

IICc

12 Yellow spot		
2016-8-2	180 × 112 × 0.6mm (Light Guide Plate)	Go to TOP
		

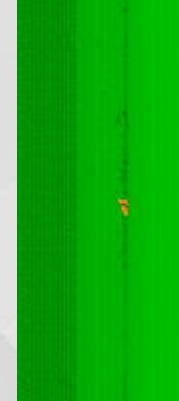
IIIc

13 Chipping

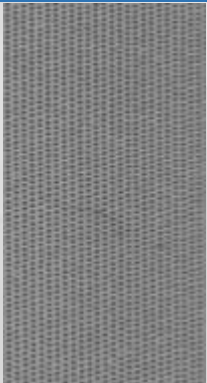
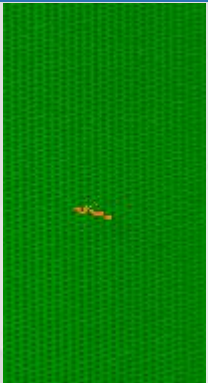
2016-8-1

353 × 210 × 0.7mm
(Light Guide Plate)

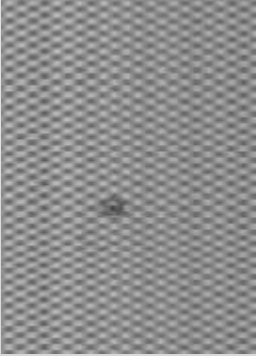

[Go to TOP](#)




IICc

14 Pull wire		
2016-8-2	160 × 99 × 2.3mm (Light Guide Plate)	Go to TOP
		

II Cc

15 Bubble		
2016-8-2	228 × 178 × 2.1mm (Light Guide Plate)	Go to TOP
		

HCc

1 Scratch		
2015-11-24	5.7" (OLED Panel)	Go to TOP
		

IIIc

2 Abnormal print

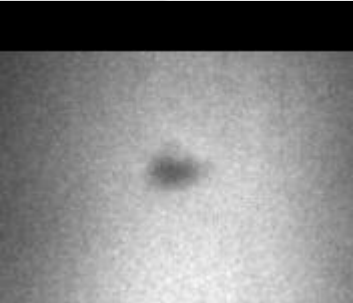
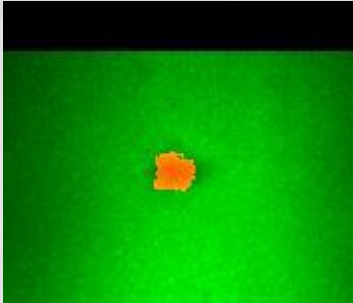
2015-11-24

5.7" (OLED Panel)

[Go to TOP](#)



IICc

3 Dirt/Dust		
2015-11-24	5.7" (OLED Panel)	Go to TOP
		

IICc

4 Foreigner


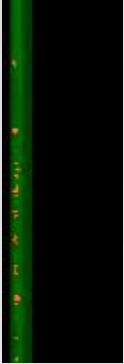
2015-11-24

5.7" (OLED Panel)

[Go to TOP](#)



IICc

5 Up side edge crack		
2015-11-24	5.7" (OLED Panel)	Go to TOP
		

IICc

6 Lack of blue Mylar

2015-11-24

5.7" (OLED Panel)

[Go to TOP](#)



IICc

7 Dent

2015-11-24

5.7" (OLED Panel)

[Go to TOP](#)



IICc

8 IC pin Defect

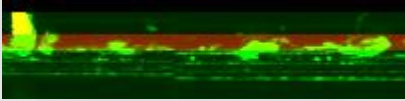
2015-11-24

5.7" (OLED Panel)

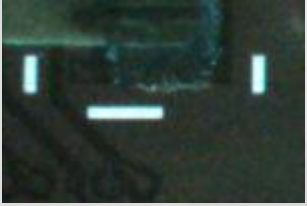
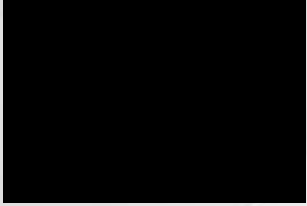
[Go to TOP](#)



IIIc

9 Overflow glue		
2015-11-24	5.7" (OLED Panel)	Go to TOP
		

IICc

10 Lack of Red Mylar		
2015-11-24	5.7" (OLED Panel)	Go to TOP
		

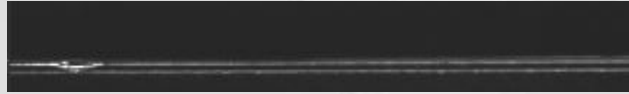
IIIc

11 Back side edge crack

2015-11-24

5.7" (OLED Panel)

[Go to TOP](#)



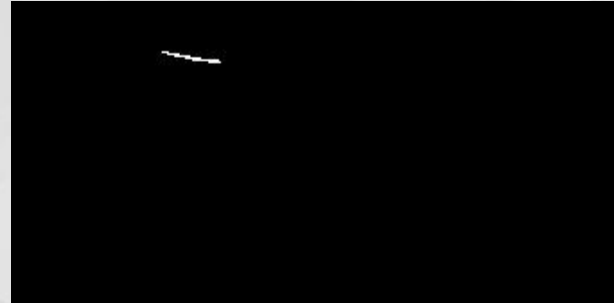
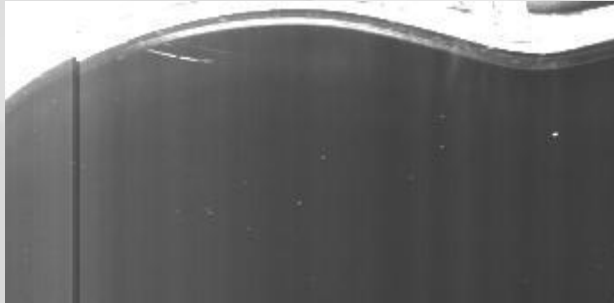
IICc

1 Scratch

2014-7-21

43 × 35mm (LOGO)

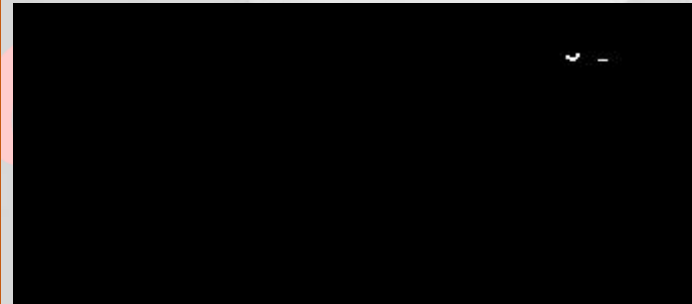
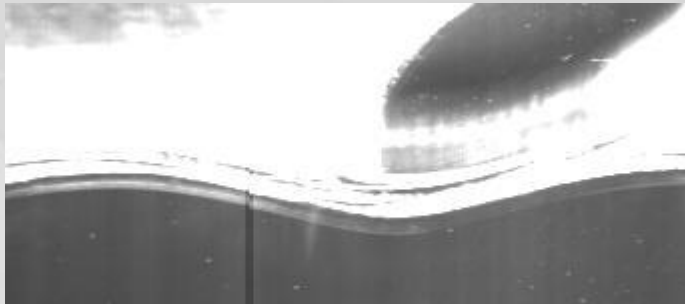
[Go to TOP](#)



2014-7-21

43 × 35mm (LOGO)

[Go to TOP](#)



2014-7-21

43 × 35mm (LOGO)

[Go to TOP](#)

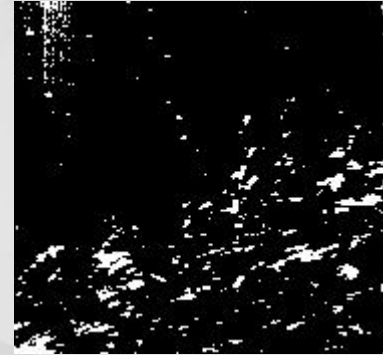
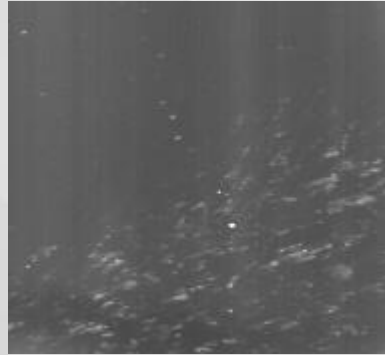


2 Contaminants

2014-7-22

43 × 35mm (LOGO)

[Go to TOP](#)



2014-7-22

43 × 35mm (LOGO)

[Go to TOP](#)



2014-7-22

43 × 35mm (LOGO)

[Go to TOP](#)

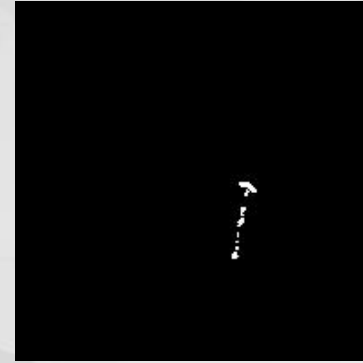
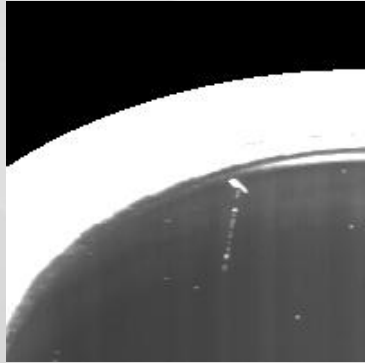


3 Stripe

2014-7-23

43 × 35mm (LOGO)

[Go to TOP](#)



2014-7-23

43 × 35mm (LOGO)

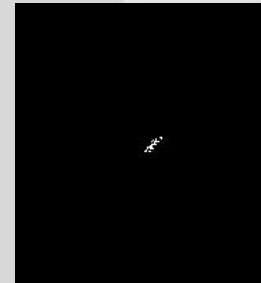
[Go to TOP](#)

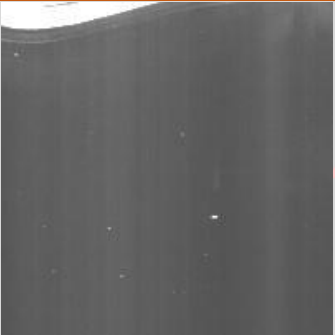
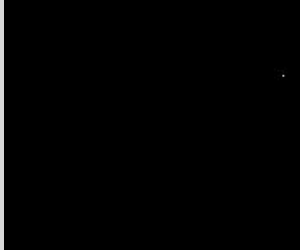


2014-7-23

43 × 35mm (LOGO)

[Go to TOP](#)



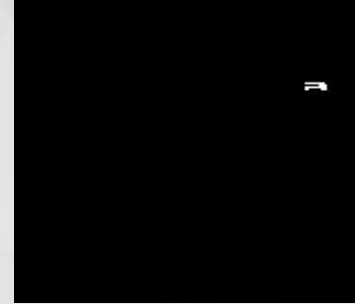
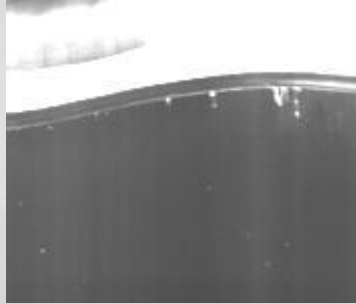
4 Pin hole		
2014-7-24	43 × 35mm (LOGO)	Go to TOP
		
2014-7-24	43 × 35mm (LOGO)	Go to TOP
		
2014-7-24	43 × 35mm (LOGO)	Go to TOP
		

5 Edge paste

2014-7-5

43 × 35mm (LOGO)

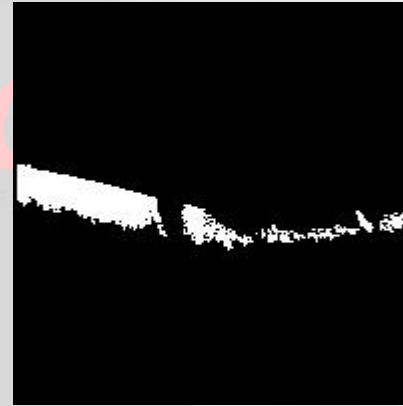
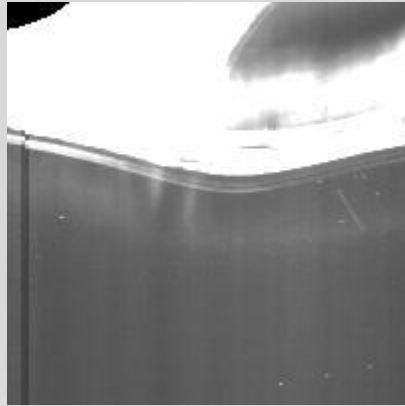
[Go to TOP](#)



2014-7-5

43 × 35mm (LOGO)

[Go to TOP](#)

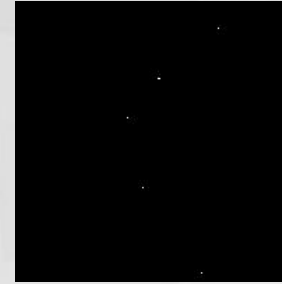
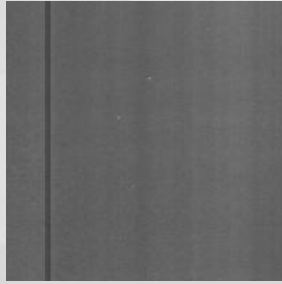


6 Rust

2014-7-24

43 × 35mm (LOGO)

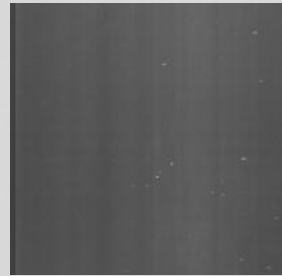
[Go to TOP](#)



2014-7-24

43 × 35mm (LOGO)

[Go to TOP](#)



2014-7-24

43 × 35mm (LOGO)

[Go to TOP](#)

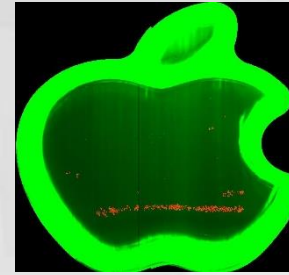
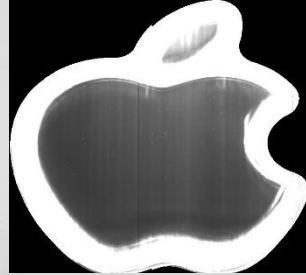


7 Tangerine skin

2014-7-25

43 × 35mm (LOGO)

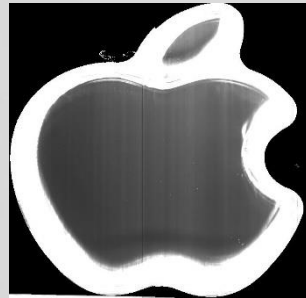
[Go to TOP](#)



2014-7-25

43 × 35mm (LOGO)

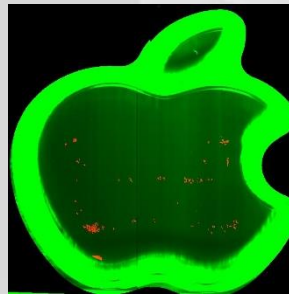
[Go to TOP](#)



2014-7-25

43 × 35mm (LOGO)

[Go to TOP](#)

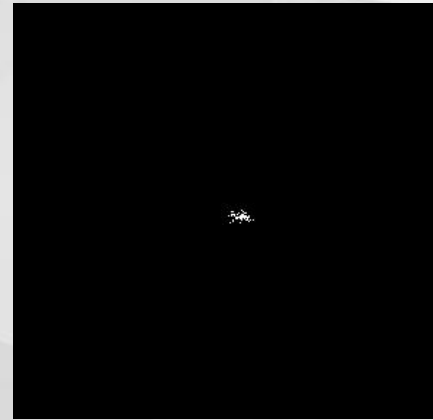
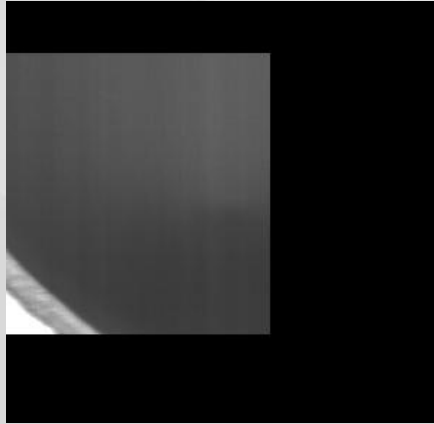


8 Dent

2014-7-25

43 × 35mm (LOGO)

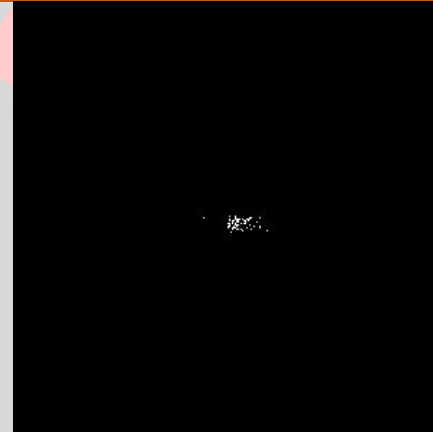
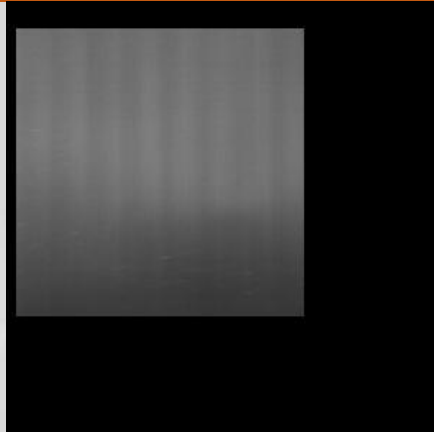
[Go to TOP](#)



2014-7-25

43 × 35mm (LOGO)

[Go to TOP](#)

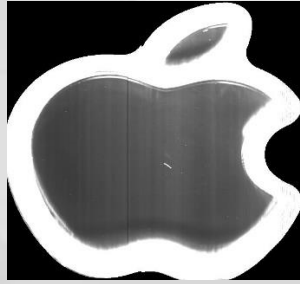


9 Haze

2014-7-25

43 × 35mm (LOGO)

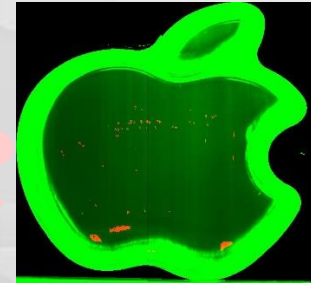
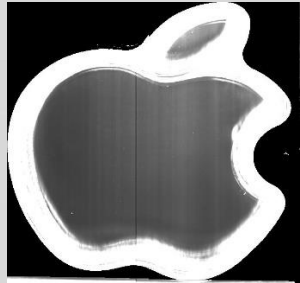
[Go to TOP](#)



2014-7-25

43 × 35mm (LOGO)

[Go to TOP](#)



2014-7-25

43 × 35mm (LOGO)

[Go to TOP](#)

