

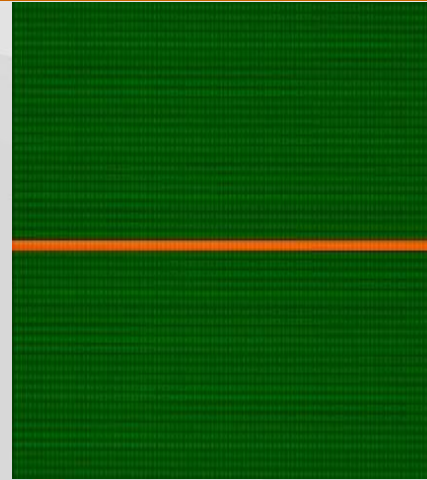
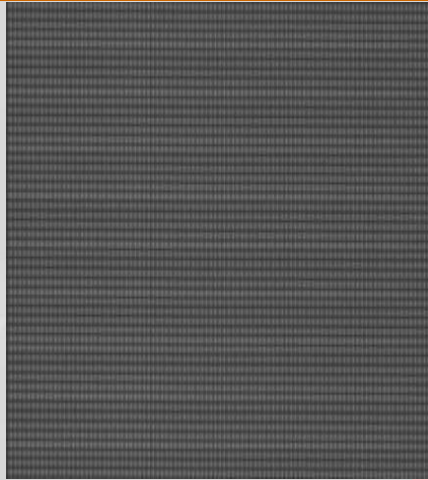
IICc 各項產品自動化檢驗項目(電氣類) 製作日期：2017/3/20		
LCM	BL	COG
1. 市松不良	1. 大黑點	1. 線類不良
2. 弓型不均	2. 小黑點	2. Mura
3. 周邊 Gap	3. 線條	3. 點(正視)
4. 面內 Gap	4. 亮點	4. 斜視輝點
5. 周邊半月 Gap	5. 漏光	5. 斜視 Mura
6. 框型不均	6. 區塊不良	6. 市松不良
7. 周邊不均	7. 黑影	7. 對位量測
8. 條狀不均	8. 表面灰塵	
9. 縱不均		
10. 橫不均		
11. 橫條紋		
12. 縱條紋		
13. BM 漏光		
14. Domain 漏光		
15. 面內漏光		
16. 白點		
17. 黑點		
18. S line		
19. G line		
20. FLICKER 調整不良		
21. B/L 異物		
22. 異物輝點		
23. 輝點總數		
24. 偏光板刮傷		

1 市松不良

2015-07-23

7" (LCM)

[Go to TOP](#)



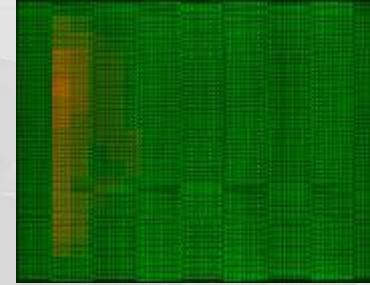
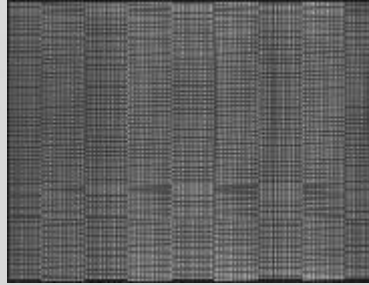
HCc

2 弓型不均

2015-01-19

7" (LCM)

[Go to TOP](#)



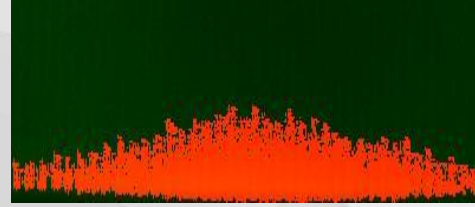
IICc

3 周邊 Gap

2015-08-04

7" (LCM)

[Go to TOP](#)



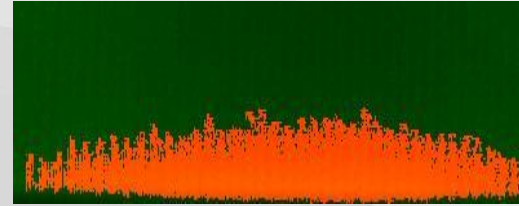
IICc

4 面内 Gap

2015-06-23

7" (LCM)

[Go to TOP](#)



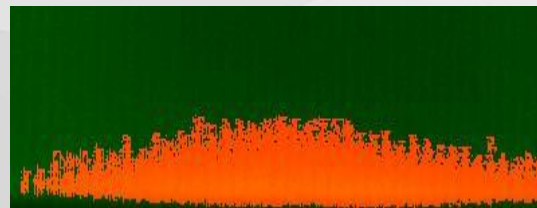
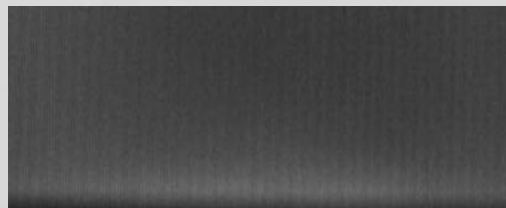
IICc

5 周邊半月 Gap

2015-06-23

7" (LCM)

[Go to TOP](#)



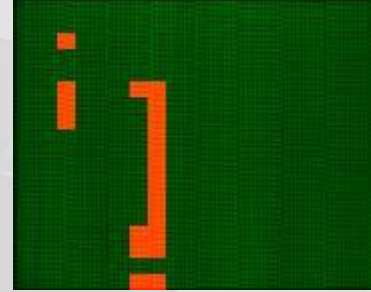
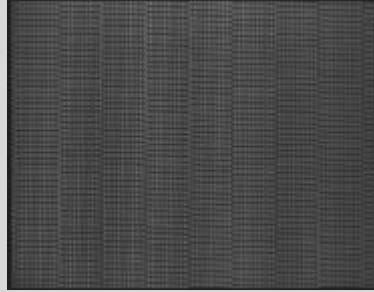
IICc

6 框型不均

2015-06-23

7" (LCM)

[Go to TOP](#)



IICc

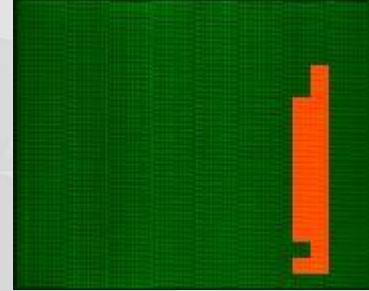
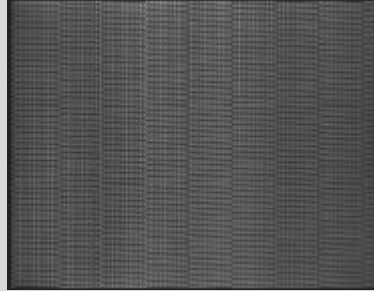
LCM07

7 周邊不均

2015-06-23

7" (LCM)

[Go to TOP](#)



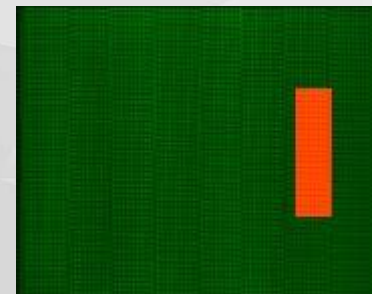
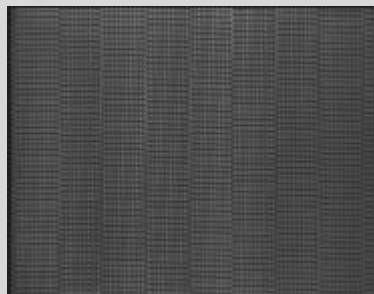
IICc

8 條狀不均

2015-06-23

7" (LCM)

[Go to TOP](#)



IICc

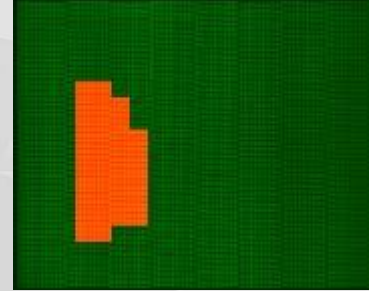
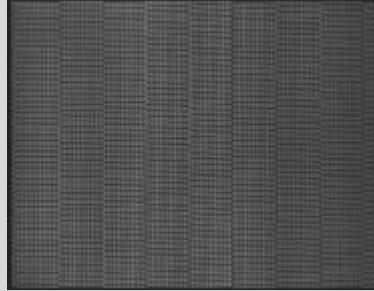
LCM09

9 縦不均

2015-08-04

7" (LCM)

[Go to TOP](#)



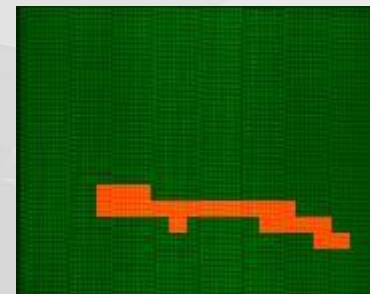
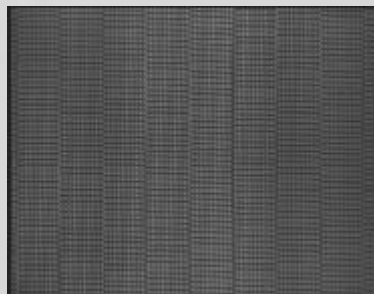
IICc

10 横不均

2015-08-04

7" (LCM)

[Go to TOP](#)



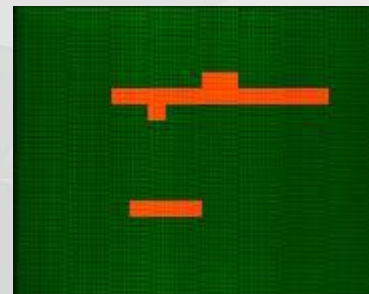
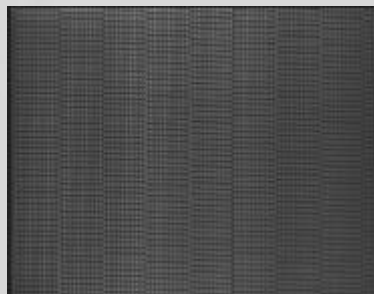
IICc

11 横條紋

2015-08-04

7" (LCM)

[Go to TOP](#)



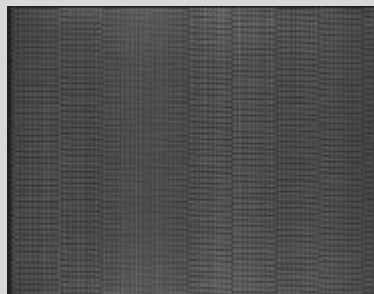
IICc

12 縦條紋

2015-06-23

7" (LCM)

[Go to TOP](#)



IICc

13 BM 漏光

2015-08-04

7" (LCM)

[Go to TOP](#)



IICc

14 Domain 漏光

2015-08-04

7" (LCM)

[Go to TOP](#)



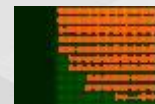
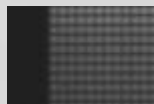
IICc

15 面内漏光

2015-08-04

7" (LCM)

[Go to TOP](#)



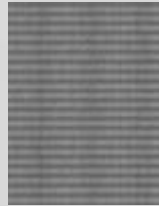
IICc

16 白點

2015-08-04

7" (LCM)

[Go to TOP](#)



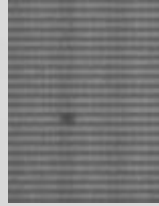
IICc

17 黑點


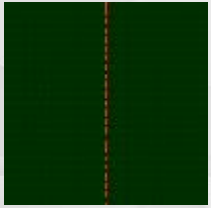
2015-08-04

7" (LCM)

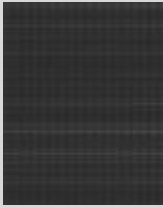
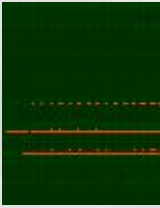
[Go to TOP](#)



IICc

18 SLine		
2015-08-04	7" (LCM)	Go to TOP
		

IICc

19 G Line		
2015-08-04	7" (LCM)	Go to TOP
		

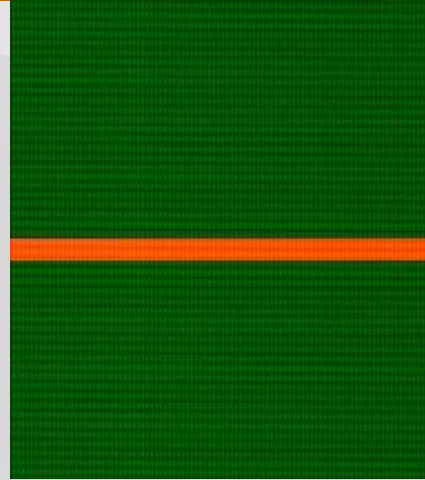
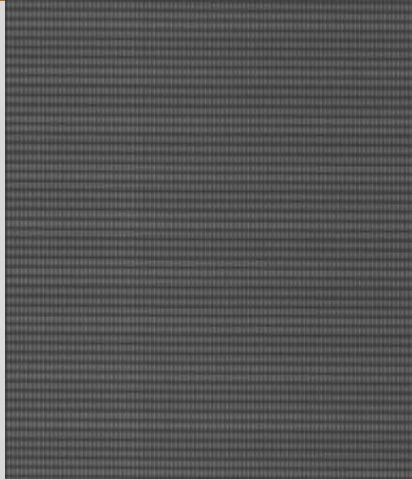
IICc

20 FLICKER 調整不良

2015-08-04

7" (LCM)

[Go to TOP](#)



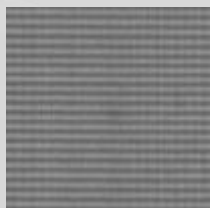
IIcc

21 B/L 異物

2015-08-04

7" (LCM)

[Go to TOP](#)



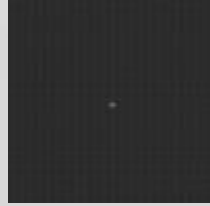
IICc

22 異物輝點

2015-08-04

7" (LCM)

[Go to TOP](#)



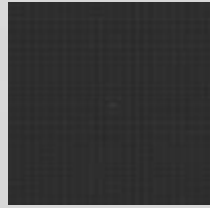
II Cc

23 輝點總數

2015-08-04

7" (LCM)

[Go to TOP](#)



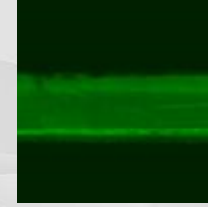
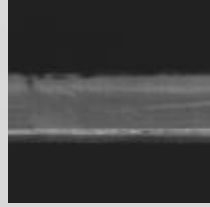
IICc

24 偏光板刮傷

2015-07-08

7" (LCM)

[Go to TOP](#)



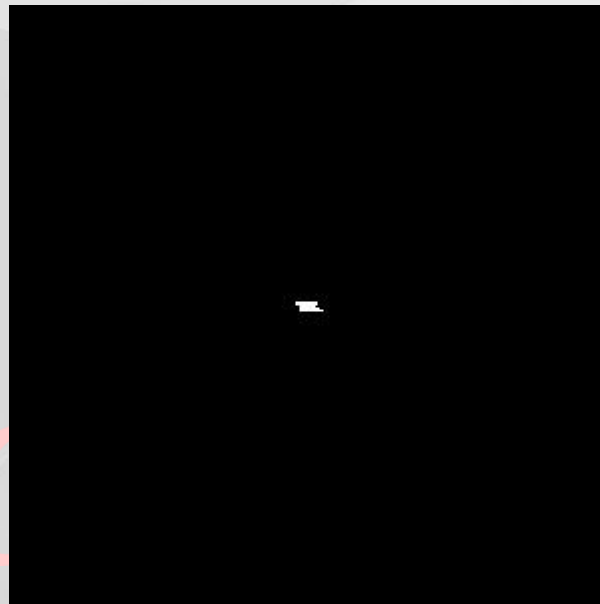
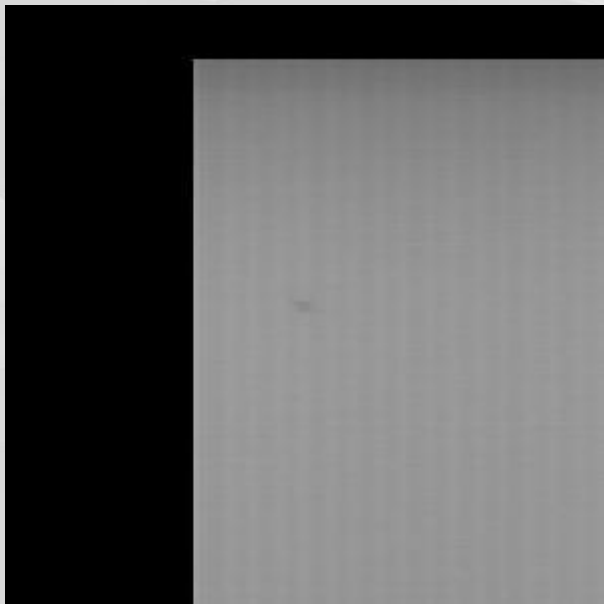
IICc

1 大黒點

2014-11-21

15" (BL)

[Go to TOP](#)

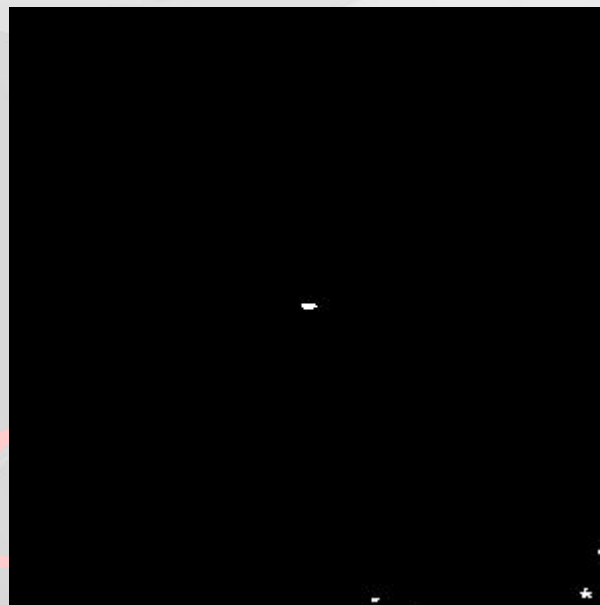
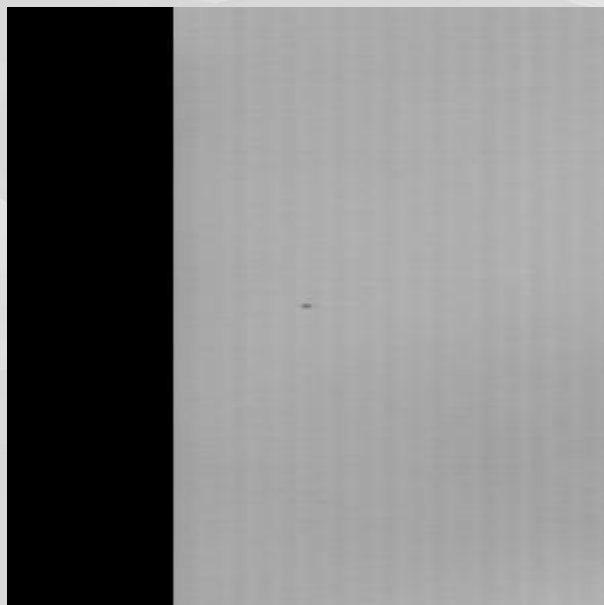


2 小黑點

2014-11-21

15" (BL)

[Go to TOP](#)

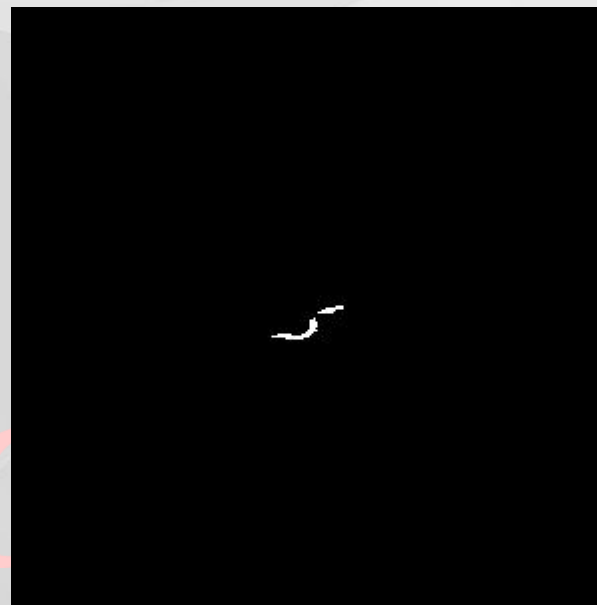
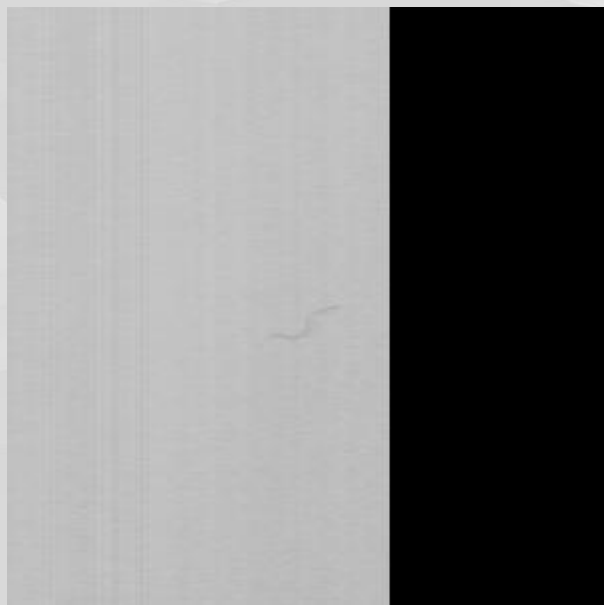


3 線條

2013-4-22

10.1" (BL)

[Go to TOP](#)

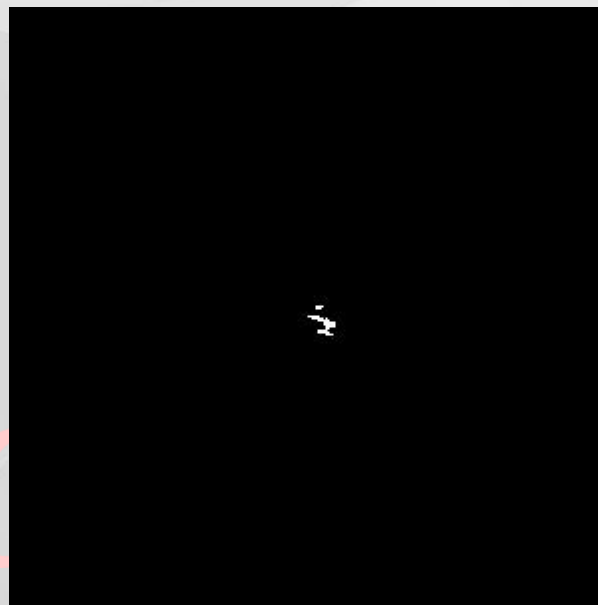
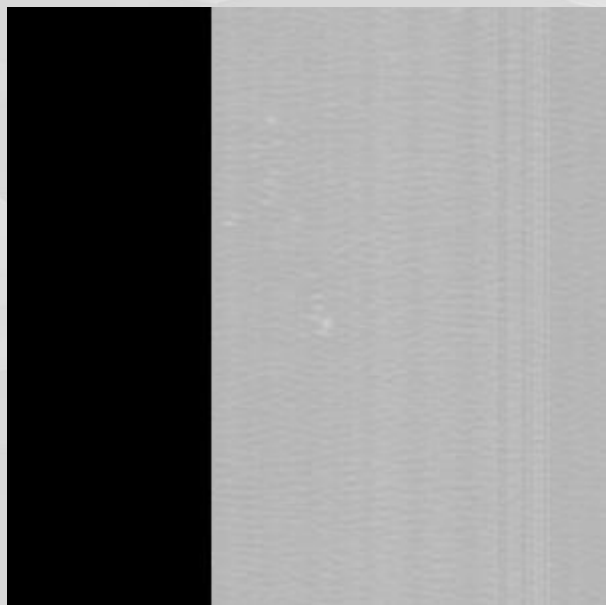


4 亮點



2013-4-22

10.1" (BL)

[Go to TOP](#)



5 漏光

2015-8-4	7" (BL)	Go to TOP
		

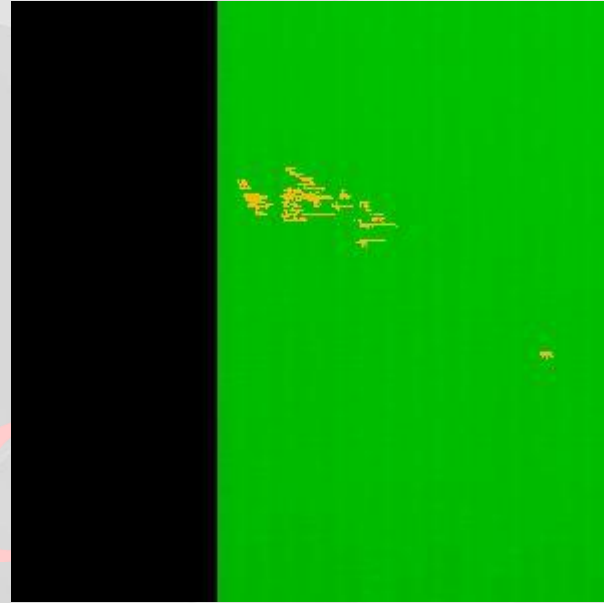
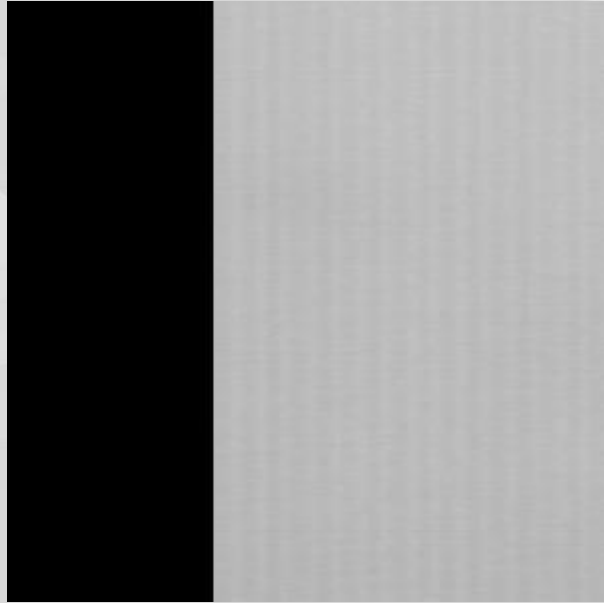
IICc

6 區塊不良

2016-7-4

9.7" (BL)

[Go to TOP](#)

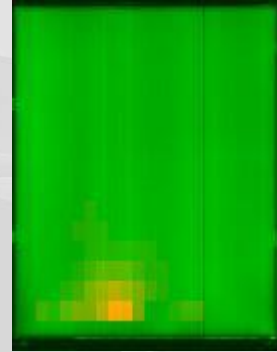


7 黑影

2015-1-13

7" (BL)

[Go to TOP](#)



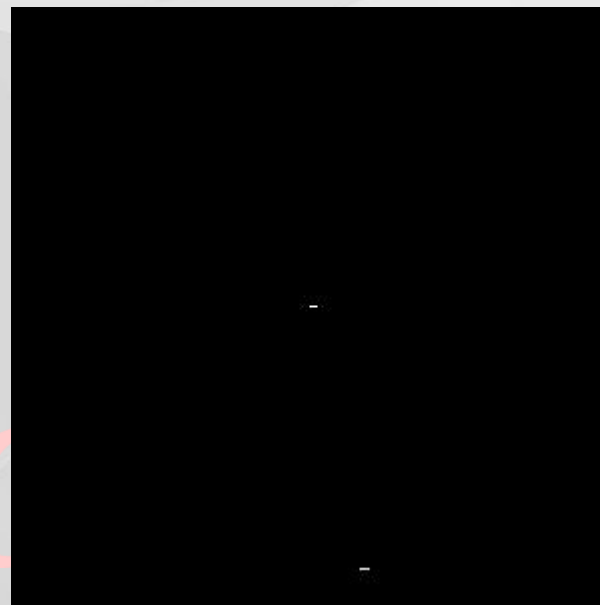
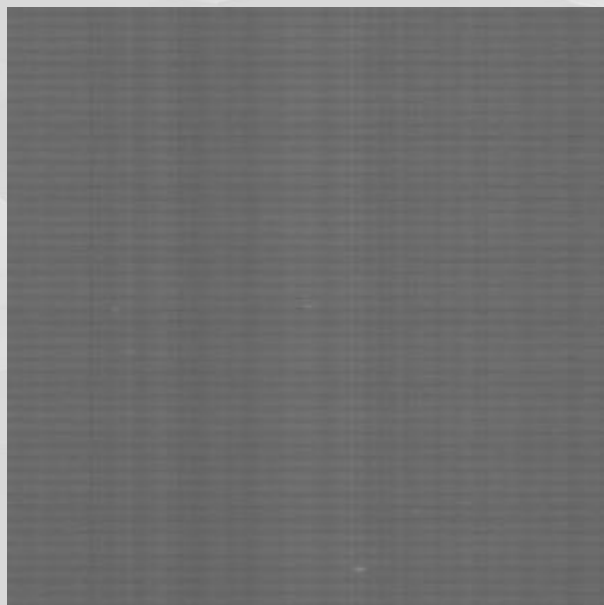
IICc

8 表面灰塵

2013-4-22

10.1" (BL)

[Go to TOP](#)

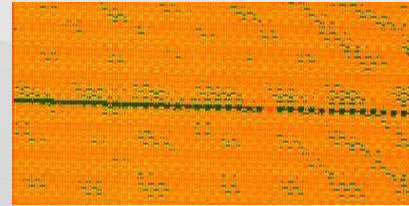
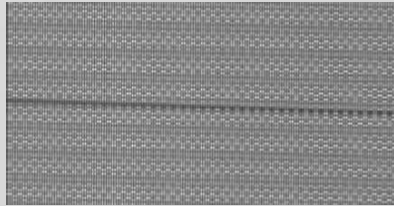


1 線類不良

2015-8-19

5" (COG)

[Go to TOP](#)



IICc

2 MURA		
2015-8-19	5" (COG)	Go to TOP
		

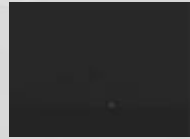
IICc

3 點 (正視)

2015-8-19

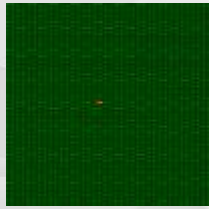
5" (COG)

[Go to TOP](#)



IICc

4 斜視輝點

2015-8-19	5" (COG)	Go to TOP
		

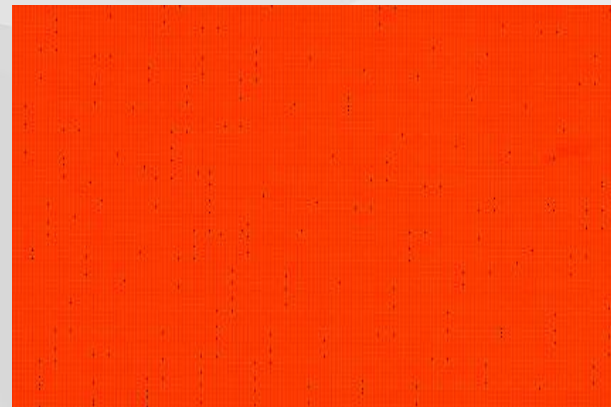
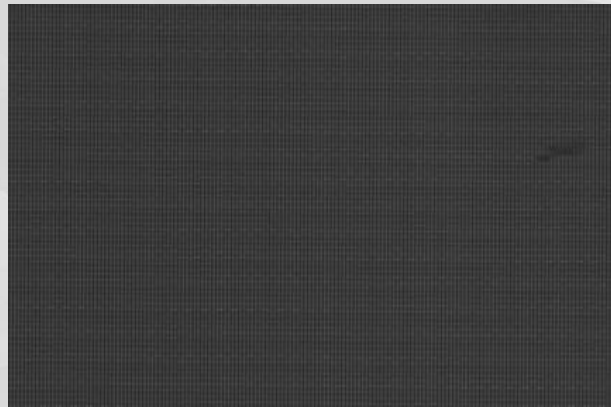
IICc

5 斜視 MURA

2015-7-8

5" (COG)

[Go to TOP](#)



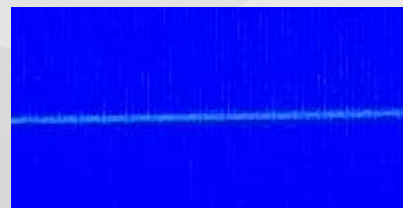
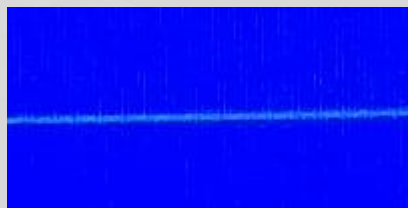
HCc

6 市松不良

2015-8-19

5" (COG)

[Go to TOP](#)



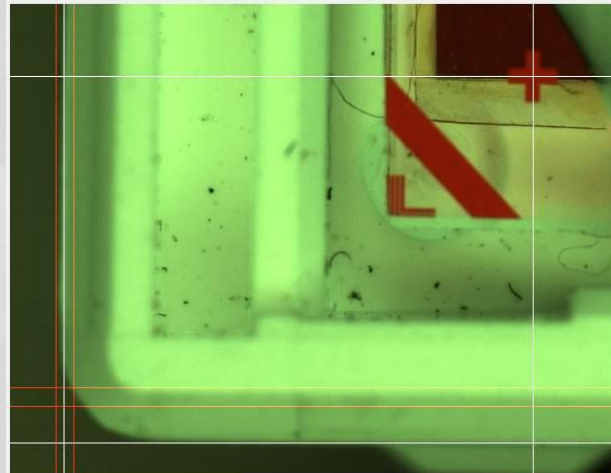
IICc

7 對位量測

2016-12-14

7" (COG)

[Go to TOP](#)



十字mark與邊緣差		
單位	Y	X
pixel	44	-1
mm	0.458	-0.010
判別	NG	